

RIVERHOMES

**Thistleworth Marine
Isleworth TW7**

£495,000
Residential mooring



Thistleworth Marine Isleworth TW7

A rare opportunity for a full cash buyer to acquire a converted navigable 1923 Dutch barge and highly sought after residential mooring on a marina which is owned by its residents. The purchaser of this beautiful barge will become a shareholder of Thistleworth Marine Limited and proud owner of a fully residential mooring on the River Thames. Mooring and maintenance fees are unusually low at £250 approx. per month and long term freehold security second to none. A unique 65 ft. x 12 ft. barge situated in a prime position, located in the London Borough of Richmond

adjacent to the Richmond Lock development, opposite Old Deer Park and within convenient walking distance of local shopping amenities at both St Margarets and Isleworth.

KEY FEATURES

65 ft. x 12 ft. 1923 Dutch barge

Highly sought after residential mooring

Marina owned by its residents

**Mooring & maintenance fees £250 approx.
per month**

On the River Thames

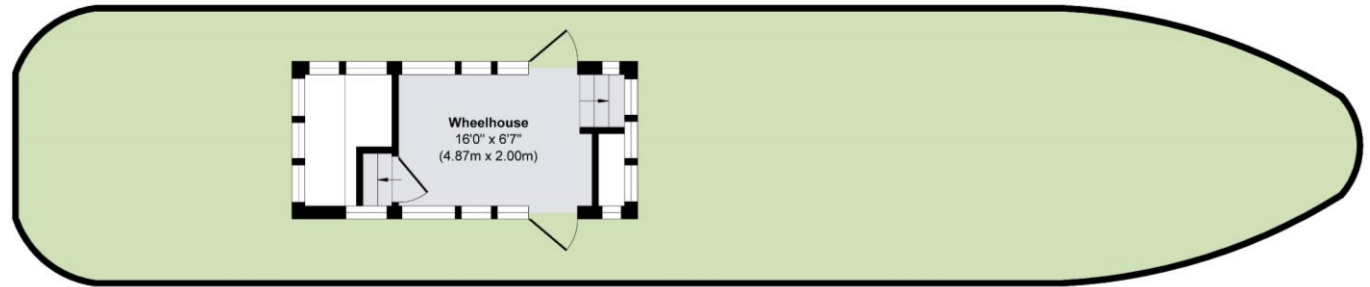
Converted navigable barge



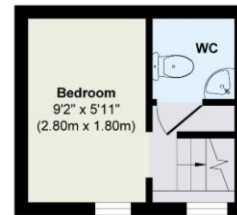
The boat features superb living accommodation with an open-plan kitchen/reception/diner, master cabin with en suite shower room, one further cabin with flexible use and a stunning, collapsible, teak wheelhouse. Further benefits include superb storage throughout, mains electricity, water and sewage, wiring for telephone and broadband, oil fired central heating and a glorious end of pontoon location providing stunning views of the River Thames and Isleworth Ait.

Eendracht would make a comfortable home for those wanting a relaxed waterside lifestyle within a commutable distance of central London and the capability of river cruising and crossing the English Channel.

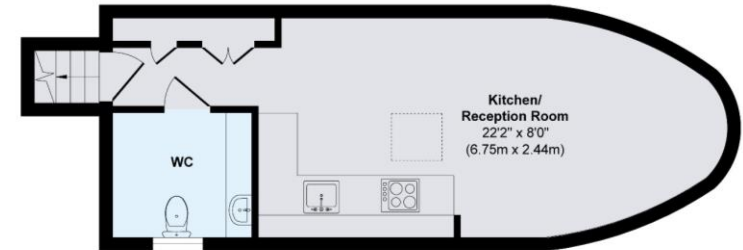




First Floor
Approximate Floor Area
104 sq. ft
(9.74 sq. m)



Lower Ground Floor
Approximate Floor Area
94 sq. ft
(8.82 sq. m)



Ground Floor
Approximate Floor Area
321 sq. ft
(29.86 sq. m)

KEY INFORMATION

Local authority: Richmond upon Thames

Council tax band: A

Internal area: 519 sq. ft. / 48.42 sq. m.

No. of bedrooms: 1